

Ormiston Victory Academy

Secondary School Admissions policy

Date adopted: February 2019

Next review date: Sept 2019

Policy Version Control

Policy prepared by	OAT Model Policy
Responsible committee	Local Governing Body
Date approved by committee	N.A
Date ratified by LGB (if required)	13 th November 2018
Description of changes from the model policy (if any)	

Ormiston Academies Trust

Secondary School Admissions policy

Policy Version Control

Policy type	Academy Model Policy
Policy prepared by (name and department)	Head of Governance
Last review date	February 2018
Description of changes	None
Date of Board of Trustees approval	Confirmed 8 th February 2019
Next review date	December 2020

Contents

1. Policy statement and principles	4
1.1 Policy aims and principles.....	4
1.2 Monitoring and review.....	4
2. Academy admissions	5
2.1 Definitions.....	5
2.2 Eligibility criteria.....	6
2.3 Waiting list.....	6
2.4 Withdrawal of a place	6
2.5 Determining arrangements and consultation	6
2.6 Admission of children outside their normal age group.....	7
2.7 Complaints about admissions arrangements	7
3. Secondary admissions.....	8
4. Sixth form admissions.....	10
Appendix 1. OAT Admissions Policy Adoption Process (for all OAT academies).....	13
Appendix 2. Template consultation letter.....	14

I. Policy statement and principles

I.1 Policy aims and principles

This policy is designed to ensure there is an open and fair admissions procedure for all applicants and to help guide parents and their children through the application process. The academy's admissions arrangements will not disadvantage unfairly, either directly or indirectly, a child from a particular social or racial group, or a child with a disability or special educational needs, and that other academy policies do not discourage parents from applying for a place for their child.

This policy details the academies arrangements for admissions and will apply to all admissions from September 2020 to August 2021. This includes in-year admissions within this period.

Parents are encouraged to visit the academy with their child if they are planning to apply for a place. We have a number of open days during the year, these will be publicised on our website. Arrangements for visits outside these dates can be made through the Principal's PA – details on the academy website.

The Academy Trust will consult on the admissions arrangements at least once every seven years or if there are proposed changes to the admission arrangements which require consultation.

This policy is consistent with all other policies adopted by Ormiston Academies Trust (OAT) / the academy and is written in line with current legislation and guidance.

I.2 Monitoring and review

This policy will be reviewed annually or in the following circumstances:

- Changes in legislation and / or government guidance
- As a result of any other significant change or event
- As the result of a decision of an Adjudicator
- In the event that the policy is determined not to be effective

If there are urgent concerns these should be raised to the Principal in the first instance for them to determine whether a review of the policy is required in advance of the review date.

2. Academy admissions

The academy admits students between the ages of 11-18. The main intakes are:

- Secondary
- Sixth form

We encourage entry at the academy's main intake time so as to aid academic progression without interruption, however, applications are welcome for entry in any year.

2.1 Definitions

The academy uses the following definitions when applying this policy:

Distance

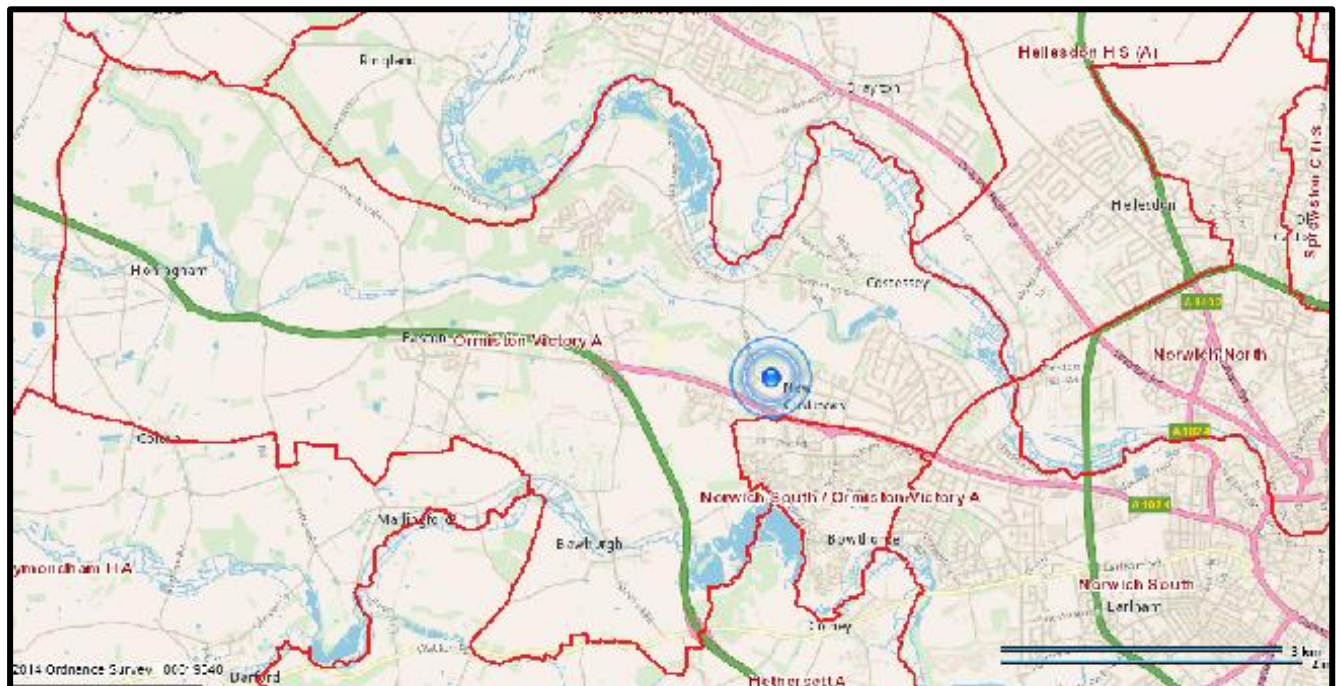
This is the straight line distance between the academy main gate and the child's home address (front door). The measuring system used is the LA computerised system for ordinary admissions.

Where two dwellings with the same front entrance the closest dwelling to the front door (lower floor and counting clockwise) will be regarded as being closer to the academy.

Dual address

Where a child lives at two different addresses, the 'home' address will be determined as the address at which the child resides for the majority of school nights. School nights are Sunday night to Thursday night inclusive. In a case where the child spends an equal number of school nights at each address, then the address where the child benefit is paid will be used. Where no child benefit is claimed the address used to register the child with a doctor will be used.

Catchment area



Catchment Feeder Schools

- Costessey Junior School
- Bawburgh Primary School
- St. Augustine's Primary School
- Queens Hill Primary School
- Easton St Peter's Primary School
- St Michael's Junior School

Siblings

A sibling is defined as:

- A brother or sister (including half brothers or sisters) who shares one or both parents, whether or not resident in the same household
- A step brother or sister where the two children are related by a parent's marriage
- An adopted or foster child living in the same household under the terms of the residents order
- Another child living in the same household where the adult has parental responsibility

In the case of twins or other children from multiple births (two or more siblings in one year group) and where only one place is available, the application will be considered together as one application.

2.2 Eligibility criteria

Entry to the academy is subject to the regulations regarding nationality, residency status and eligibility to study in the United Kingdom. Students / pupils are eligible to be admitted to the academy if:

- They are British citizens and / or EU nationals
- They are a non EU national that has –
 - 'Exceptional' or 'Indefinite Leave to Remain' in this country
 - Refugee status

2.3 Waiting list

If the number of applicants exceeds the number of places available, children who have been refused a place will be automatically placed on a waiting list unless there is a specific request that this should not happen. The child may gain entry to the academy if a place becomes available.

The academy will maintain a waiting list until 31 December following the main academy intake from the start of the academic year. Each added child will require the list to be ranked again in line with the academy's oversubscription criteria in which the application was originally considered. Priority will not be given to children based on the date their application was received or the date when they were added to the list.

2.4 Withdrawal of a place

The academy will only withdraw an offer of a place if:

- The place was offered in error
- Acceptance of the place was not received in a reasonable period of time
- The offer was obtained through a fraudulent or intentionally misleading application (the academy may request evidence to ensure the child meets the admissions criteria) – if this occurs the application will be considered afresh

The academy will not withdraw the place if the student has started at the academy unless the place was obtained fraudulently. If this is the case then the academy will decide whether to withdraw the place based on the circumstances including the length of time the child has been at the academy.

2.5 Determining arrangements and consultation

Admissions arrangements will be set annually, this will happen even if there are no changes from previous years and a consultation is not required.

If the academy changes any significant aspect of the admissions procedure then OAT (Ormiston Academies Trust) will be informed prior to making changes and beginning the consultation process. Any significant changes proposed by the academy must be approved by OAT.

The academy will consult on admissions arrangements when changes to the academies arrangements are proposed (no consultation is required for an increase in PAN or changes to ensure compliance with the admissions regulations). Where the admission arrangements have not changed from the previous year there is no requirement to consult, subject to the requirement that we must consult on our admission arrangements at least once every seven years, even if there have been no changes during that period.

We will publish any consultation for admissions on our website and notify appropriate stakeholders. If there are any substantive responses to the academy's consultation then these will be sent to OAT. Any subsequent changes will be made will be in consultation with OAT.

Once our admissions arrangements have been determined we will notify the appropriate bodies and publish a copy of the determined arrangements on our website.

2.6 Admission of children outside their normal age group

Parents may seek a place for their child outside their normal age group, for example, if the child is gifted and talented or has experienced problems such as ill health. If parents wish to do this they must contact, in the first instance, Mrs Carter, Admissions Manager on: pa@ormistonvictoryacademy.co.uk. Contact with the academy must be made at the earliest opportunity to avoid any delays in the application process.

The decision whether a child is admitted outside of their normal age group will be made on a case by case basis by the academy's governing body. A panel of at least three governors will consider the admission request based on the student's:

- Academic ability
- Social and emotional development
- Views of the parents and principal; and
- Any additional relevant information available

The panel will have to be satisfied that the child would be able to cope with the work of the year applied for and that the student would be able to cope with the personal development whilst being with a year group who are of a different age. In order to support any application parents will need to submit evidence to demonstrate that the admission into a different year group is in the best interests of the child.

Once the governing body has made a decision the child can then apply to the academy using the process detailed in this policy. Parents have a statutory right to appeal against the refusal of a place however this right does not apply if the child is offered a place at the academy but it is not in their preferred age group.

2.7 Complaints about admissions arrangements

Any person, or body, can make an objection to the Schools Adjudicator when they consider the academy's arrangements are unlawful, or not in compliance with the School Admissions Code / relevant legislation relating to admissions.

Complaints about the appeals panel can be made to the Secretary of State.

3. Secondary admissions

The process detailed in this section is for admissions for secondary admissions. For further information on this process please contact the Principal's PA on: PA@ormistonvictoryacademy.co.uk

Number of spaces (PAN)

The academy has an agreed admission number of 210 per year. The academy may set a higher Published Admissions Number (PAN).

Application process

Applications for the 2020/2021 academic year begin 10 September 2019.

To apply you need to complete the Norfolk County Council's (NCC) common application form and submit this directly to NCC by the deadline, 31 October.

More information can be found on the NCC Website:-

http://www.norfolk.gov.uk/Childrens_services/Schools/School_admissions/index.htm

Important dates

1. 11 September 2019 – Admission round opens. Letters and application forms distributed to schools and given to Year 6 pupils
2. 31 October 2019 – All applications must be received by NCC by this date
3. 6 February 2020 – Coordination scheme applied. No changes can be made to applications after this date
4. 2 March 2020 – Offer day. Parents sent letter, telling them at which school their child has been offered a place. Parents applying online will receive an email with the information. Parents will also be able to access their account at www.admissionsonline.norfolk.gov.uk
5. 20 March 2020 – closing date for appeals and late applications
6. 3 April 2020 – Mini admission round. All late applications are considered on this date
7. May/June 2020 – Appeal hearings
8. 31 December 2020 – All waiting lists cease to be held

Late applications will not be considered until all other applications have been reviewed.

All offers of secondary places will be made through the NCC. The academy will not contact parents about the outcome of their application until the offer from the local authority has been received. All offers will be made on the secondary national offer day (1 March or the next working day).

Selection criteria

If the number of applications is less than the number of spaces then all children will be offered places.

Oversubscription criteria

If the academy receives more applications than there are available places then children with the academy named on an education, health care plan (EHC) or equivalent will be automatically admitted to the academy. If there are still places available, priority for admission will be given to those children who meet the oversubscription criteria set out below:

1. Looked after children and those who were previously looked after but immediately after being looked after was adopted or became subject to a child arrangements order or special guardianship order. A looked after child is a child who is in the care of a local authority, or being provided with accommodation by a local authority in the exercise of their social services functions (definition used is in Section 22(1) of the Children Act 1989).
2. Children with a sibling, as defined in 2.1 above, already at the academy at the time of admission (not the sixth form).

3. Children in the academy catchment area and/ or attending a catchment feeder school. If applications exceed the numbers in any one category, the highest priority will be given to children living nearest the academy, as defined in 2.1 above.
4. Distance will be used as the last criterion for families who don't fit into 1, 2 or 3 above.

In-year admissions

Applications for in-year admissions are considered in the same way as those made at the beginning of the academic year and are dealt with in accordance the local authorities Fair Access Protocol. In-year admissions forms can be obtained from Norfolk County Council:-

http://www.norfolk.gov.uk/Childrens_services/Schools/School_admissions/Moving_schools_in-year_transfer/index.htm

Students included in the Fair Access Protocol will take precedence over those held on the waiting list. Once a student has been identified for admission to the academy under the Fair Access Protocol the academy will notify the local authority within seven calendar days of the decision to accept or refuse the student's admission.

If the academy refuses entry, the local authority may request a direction from the Education Funding Agency (on behalf of the Secretary of State). The academy will set out its reasons for refusal in writing to the local authority within 15 calendar days (for CLA this is reduced to seven calendar days) and may make further representations directly to the EFA (these will be made within seven calendar days). The decision of the Secretary of State will be binding upon the academy.

Unsuccessful applications

The academy will inform the child's parent if a decision has been made to refuse their child a place at the academy for which they have applied, this will include the reason why admission was refused, information about the right to appeal, deadlines and contact details.

A child is allowed to be on the academy waiting list while lodging an appeal and the appeal will not affect their position on the list. The decision of the appeals panel is binding on the academy.

4. Sixth form admissions

The process detailed in this section is for admissions for sixth form admissions. For further information on this process please contact Richard Timm, Head of Sixth Form on sixthform@ormistonvictoryacademy.co.uk

The prospectus will be published during the Autumn Term each year. All current Ormiston Victory Academy students will be invited to an open event and the event will be marketed locally and on the school website to encourage external candidates. They will be specifically issued to:

- All current Year 11 students
- Students visiting from other educational establishments
- Those making specific requests by contacting the school

Number of spaces

The academy has agreed published admission number of up to 100 external applicants per year.

Application process

Applications for the 2020/2021 academic year begin on 10th September 2019. The closing date for applications for this year is 31st July 2020.

Your application for sixth form can be submitted through Help You Choose or Google Forms.

Help You Chose:

<https://helpyouchoose.org/index.cfm?fuseaction=search.courses&sid=159539&code=ormiston%20victory>

http://www.ormistonvictoryacademy.co.uk/wp-content/uploads/2014/05/2016_Sixth_Form_Application_Victory_Academy.docx

Google Form:

https://docs.google.com/a/ormistonvictoryacademy.co.uk/forms/d/1sJAPeIRuAVPTIGfBR2TeyVy6a5I_uSd8KCNlNMmhKlfM/viewform?c=0&w=1&usp=send_form

Please apply through either of these websites. Alternatively, you may download a copy of the application form from our website or by contacting the academy. Please email completed application forms to sixthform@ormistonvictoryacademy.co.uk.

The application process is the same for existing academy students and for those who are transferring from another school/academy.

Information, advice and guidance meetings/interviews are set up for every prospective Sixth Form student, with their parents, to provide expert professional support at a critical time of decision.

Students who do not meet the entry criteria can discuss the courses that they want to follow with the Assistant Principal responsible for Sixth Form and may be given permission to join in exceptional circumstances.

Offer letters are sent out within 14 days of the scheduled meeting taken place. The offer maybe conditional or unconditional, depending on the course.

Late applications will only be considered where there are a surplus of places in the academy / course(s) applied for once the oversubscription criteria has been applied.

Selection criteria

Your choice of Sixth Form is an important one and we want to make sure we get it right for you. We have high expectations and it is essential that you choose the right courses to enable you to succeed. You should therefore refer to the entry requirements for both the level of qualification and each individual subject. Where you do not meet the requirements, but feel that there are good reasons why you should be allowed on the course; please feel free to discuss this with one of the Sixth Form team.

All existing academy students seeking transfer to our sixth form, and all external students seeking admission to the our sixth form, will need to have the same minimum academic qualifications for entry.

Level 3 Academic Entry Requirements

In order to follow an academic Level 3 programme of study you should have achieved five or more GCSE (or equivalent) Grade 5's or above, including English* and mathematics.

In addition you should have achieved the GCSE grades below to study the individual subjects of your choice.

A-Level Subjects	GCSE Requirement
Art	6 in Art - GCSE Art is compulsory
Biology	7 in Biology or 7-7 in Double Science
Business A level	5 in English and Maths with Business studies or 6 in English and Maths
Chemistry	7 in Chemistry or 7-7 in Double Science
Computer Science	7 in Mathematics or Computer Science
Design Technology	6 in Mathematics and 5 in Science. GCSE DT preferable
English Language	6 in English*
English Literature	6 in English*
English Language & Literature Combined	6 in English*
Film Studies	6 in English*
Further Mathematics	8 in Mathematics - students should also be studying Mathematics GCE
Geography	6 in Geography – GCSE Geography is compulsory
History	6 in History – GCSE History is compulsory
Law	6 in English*
Mathematics	7 in Mathematics
Physical Education A level	6 in English* and a 5 in Science.
Philosophy and Ethics	6 in English*
Physics	8 in Physics or 7-7 in Double Science and an 8 in Mathematics Students should also be studying Mathematics GCE
Psychology	6 in English*
Sociology	6 in English*

* Please use the highest grade from either English language or English literature.

Level 3 Vocational Entry Requirements

In order to follow an vocational or mixed Level 3 programme of study you should have achieved five or more GCSE (or equivalent) Grade 5s or above, including English* and mathematics. Those students without a grade 4 or above in English or mathematics, will take a level 2 qualification in these as part of their studies.

In addition you should have achieved the GCSE grades below to study the individual subjects of your choice.

Vocational Subjects	GCSE Requirement
Applied Science	5 in English* and Mathematics
Beauty Therapy	5 in English* and Maths. Individual interviews with Head of Beauty
Business (BTEC)	5 in English* and Mathematics
Childcare and Education	5 in English* and Mathematics
Creative Digital Media	5 in English* and Maths
Information Technology	5 in ICT or 4 in Maths
Performing Arts	5 in Performing Arts, English*, Maths. Interview with Director of Performing Arts
Sport	5 in English* and Maths

* Please use the highest grade from either English language or English literature.

Level 2 Entry Requirements

We have a range of Level 2 courses available. To find out more about entry requirements and information on these, please speak to a member of the sixth form team.

Oversubscription criteria

If the academy receives more applications that meet the selection criteria above than there are available places, priority for admission will be in line with the oversubscription criteria set out below:

1. Looked after children and those who were previously looked after but immediately after being looked after was adopted or became subject to a child arrangements order or special guardianship order. A looked after child is a child who is in the care of a local authority, or being provided with accommodation by a local authority in the exercise of their social services functions (definition used is in Section 22(1) of the Children Act 1989).
2. Children with a sibling, as defined in 2.1 above, already at the academy at the time of admission.
3. Children in the academy catchment area. If applications exceed the numbers in any one category, the highest priority will be given to children living nearest the academy, as defined in 2.1 above.
4. Distance will be used as the last criterion for families who don't fit into 1, 2 or 3 above.

In-year admissions

Applications for in-year admissions are considered in the same way as those made at the beginning of the academic year. We will also consider whether it is appropriate to place a student in the class late based on the learning that has been missed. If the student is transferring from another sixth form and was doing an equivalent course this will be taken into account in deciding whether a place can be offered.

In-year admissions forms can be obtained from the Sixth Form, please contact sixthform@ormistonvictoryacademy.co.uk to arrange a meeting.

If the academy refuses entry, the local authority may request a direction from the Education Funding Agency (on behalf of the Secretary of State). The decision of the Secretary of State will be binding upon the academy.

Unsuccessful applications

The academy will inform the child's parent if a decision has been made to refuse their child a place at the academy for which they have applied, this will include the reason why admission was refused, information about the right to appeal, deadlines and contact details.

(Note – no changes required for the Admissions for the Academic Year 2020/2021)

Appendix I

Consultation Process

1st October 2018

The date at which academies must begin the six week consultation period.

16th November 2018

The last possible date that academies can submit their final policy to the Governance Team having closed consultation and made changes if necessary

31st January 2019

The date by which the Governance Team will return your admissions policy with confirmed approval

28th February 2019

The deadline by which academies **MUST** publish their 2020-2021 policy online and their appeals timetable on the academy Website

28th February 2019

The deadline by which academies should send their admissions policy to their LA.

What constitutes Consultation?

Consultation involves sending out the academy's proposed admission policy **before** it is determined to invite comments or objections. Academies **MUST** consult with, i.e. send their proposed admissions policy to:

- Parents of children between the ages of two and eighteen
- Other person in the relevant area who in the opinion of the school have an interest in the proposed arrangements
- All other admission authorities within the relevant area (except that primary schools need not consult with secondary schools). This would include any other school in the borough which is their own admission authority.
- The local authority
- Any adjoining neighbouring local authority
- The Diocese [if applicable]

Good practice would be to ask all your feeder primary schools to send out letters to parents, put a notice in your local paper, advertise the consultation in other local areas or community centres etc. Make a record of all the ways in which you ensured the community was informed of the consultation.

For the duration of the consultation period, the academy **MUST** also publish a copy of their full proposed admission arrangements on their website together with details of the person within the academy to whom comments may be sent and the areas on which comments are not sought. Academies **MUST** also send upon request a copy of the proposed policy to any of the person or bodies listed above inviting comment.

Failure to consult effectively may be grounds for subsequent complaints and appeals and so it pays to get the consultation right.

Appendix 2

Template consultation letter

Admissions policy consultation letter

Address line one
Address line two
Town
County
Postcode
Date

RE: Consultation on admission arrangements

Dear **interested party**,

I am writing to notify you of the upcoming consultation on the academy's admissions policy. The consultation period will run from 1st October 2018 until 12th November 2018; during this time, parents are invited to express their views and any concerns about the **[proposed changes to the]** admission arrangements at **name of academy**.

In accordance with the DfE's 2014 statutory 'School Admissions Code' guidance, as a school we must consult on our admission arrangements when changes are proposed, and at least once every seven years.

[Choose one of the two options set out below.]

[Changes are proposed]

To this end, the following amendments to our admission arrangements have been proposed:

- **[Brief outline of the key proposals, e.g. an increase in admission numbers]**

This is being proposed as **[state reason behind proposal, e.g. due to the rapid growth in the area, there has been an increased demand for school places]**.

A full version of the proposed changes to the admission arrangements, as well as the rationale behind them, is available to view on the academy website or in hard copy from **the school office**.

OR

[Changes are not proposed – this is the version to use if you are doing the statutory 7 year consultation]

For this reason, a consultation is currently being held to meet the academy's statutory duty; however, it should be noted that no changes to the current admission arrangements have been proposed.

[For either option, the following information should also be included.]

In accordance with statutory DfE guidance, the consultation will run for at least six weeks and, as an interested party at **name of academy**, we are keen to hear your views on the **[proposed changes/current admission arrangements]**; therefore, we invite you to participate in the consultation if you have any concerns regarding the matter.

All responses to the consultation should be made in writing and submitted before **time** on **date** to:

Address or email address.

Please note that written responses should outline your personal details, including your name, address and relationship to the academy. You are also encouraged to provide feedback on the **academy** website here: **link to website**.

At the end of the consultation period, the governing board will meet to consider responses and submit a final policy to the Admissions policy

Ormiston Academies Trust Board of Trustees for approval.

For further information regarding the consultation process, please refer to our proposal document, copies of which can be located on the academy website or in hard copy from **the school office**. If you wish to further discuss this matter, or anything mentioned in this letter, please contact the **school office** on **phone number** or **email address**.

Yours sincerely,

Name

Principal